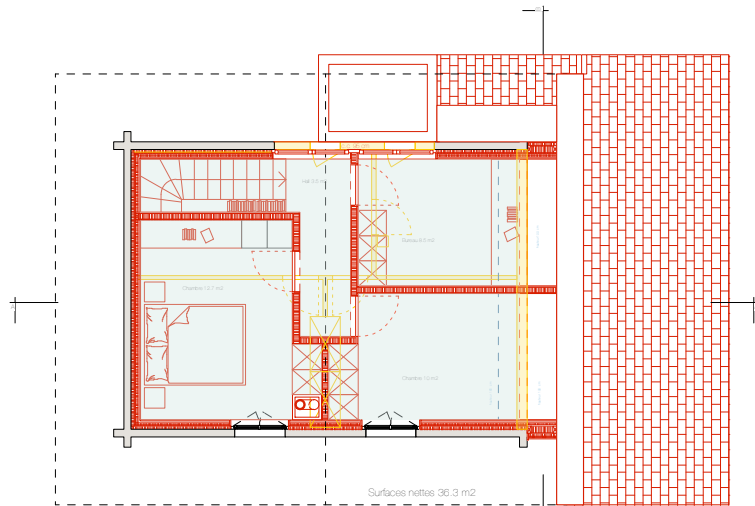
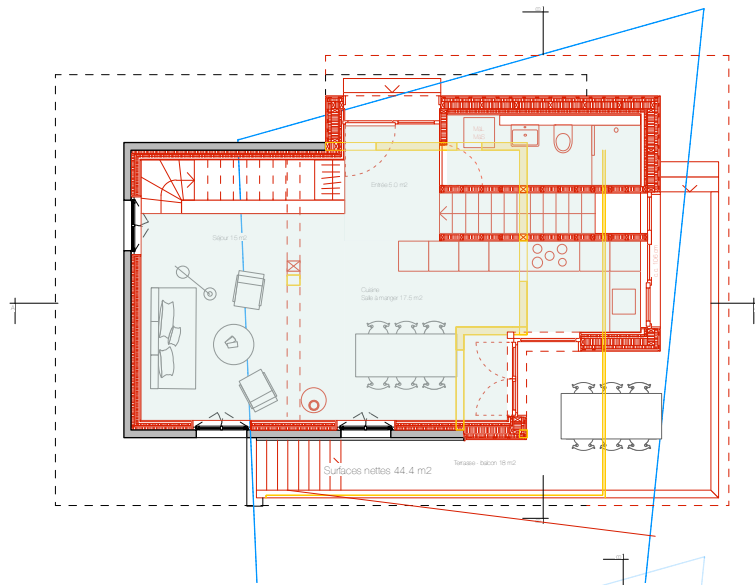


Calcul de Surface Utile Future (selon norme SIA 416)

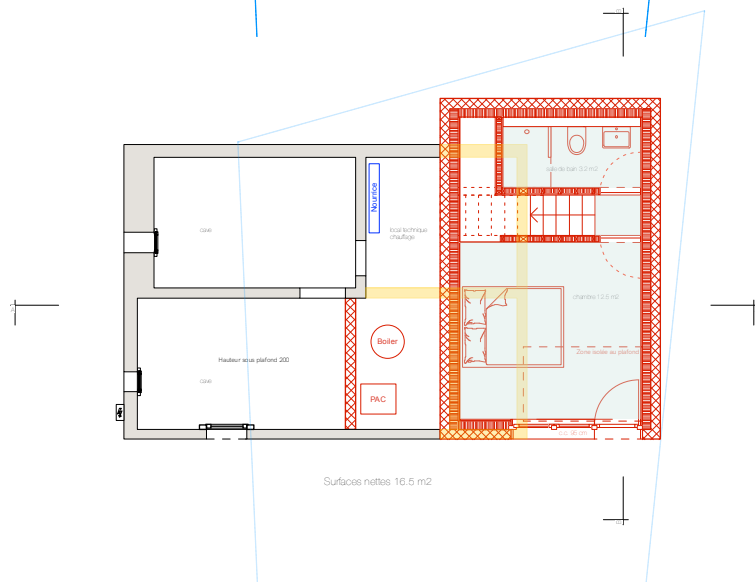
Surface utile combles 36.3 m²



Surface utile rez 44.4 m²



Surface utile sous-sol 16.5 m²



Surface utile future :

Sous-sol : 16.5 m²

Rez : 44.4 m²

Combles : 36.3 m²

Total surface utile future = 97.2 m²